

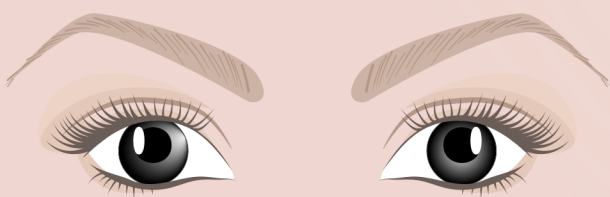
MASTER YOUR EYELINER STYLES THIS HOLIDAY

USING BASSAM FATTOUH COSMETICS
CREAM EYELINER

ALMOND EYES

The eyeliner style that brings the spark in your eyes is simply lining your lashline!

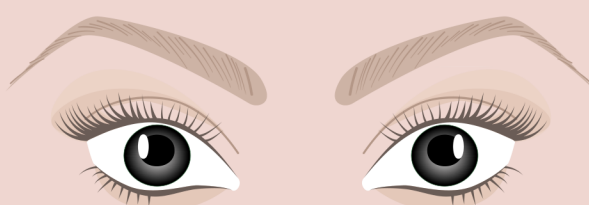
Start drawing a thin line on the upper eyelid, and make it thicker towards the outer corner of your eye. Try smudging the liner a little for a more dreamy look.



BIG EYES

You can experiment with several eyeliner shapes, from the bold wing, to foxy eyeliner, and the unconventional double-winged eyeliner!

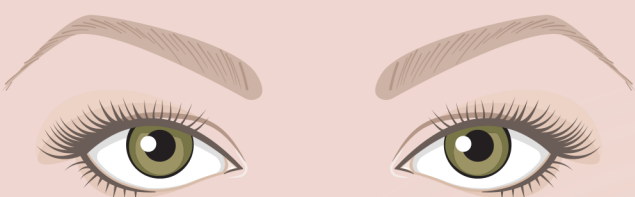
Start by making the first wing by extending your upper lash line, and then draw a second tail from the corner of your lower lash line.



HOODED EYES

Accentuate your eye shape with a simple cat eye! Make sure it isn't too thin, or too thick!

Start with the inner corner of your lashline, and trace the wing to make it thicker at the outer corner. Then, fill it in as you keep your eyes open.



DOWNTURNED EYES

The eyeliner shape that highlights your eyes' beauty is a very thin cat eye!

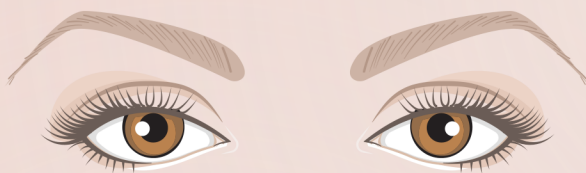
Start your eyeliner a little beyond the center of your lashline, and flick it upwards (keeping it short) towards the outer edge of your eye.



SMALL EYES

To best reflect the light in your little eyes, go for the most simple, bright-colored eyeliner!

Start your eyeliner from the inner corner of your eye. Draw your eyeliner in the same width along your upper lash line. You can add white eyeliner on the inner fringe of your lower lash line.



ROUND EYES

Your eye shape absolutely loves a long-winged eyeliner!

Start with the outer corner of your upper lash line, and extend your eyeliner wing about 1cm outside your lash line. Keep your wing flicked and straight for an outstanding look!

